



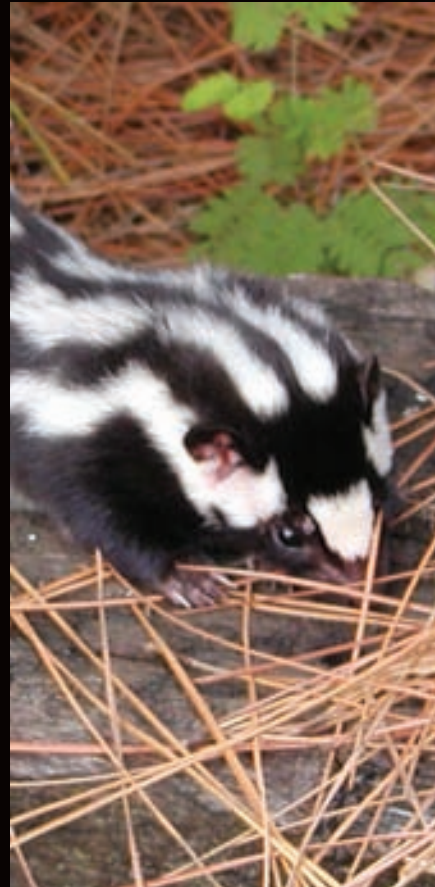
THE DUNN  
FOUNDATION

The Batchelor  
FOUNDATION



Jane's  
TRUST

The Martin  
FOUNDATION



# Wildlife

**Wildlife Habitat Planning Strategies, Design Features and  
Best Management Practices for Florida Communities and Landowners**

# 1 | Acknowledgements

This project was made possible by a grant from Florida's Wildlife Legacy Initiative. The Legacy Initiative is a program of the Florida Fish and Wildlife Conservation Commission, with funding provided through State Wildlife Grants administered by the US Fish and Wildlife Service. Additional support was provided by the Florida Wildlife Federation, Jane's Trust, The Martin Foundation, The Batchelor Foundation, the Elizabeth Ordway Dunn Foundation and the Florida Department of Community Affairs.

## Special recognition is given to:

**Dan Pennington**, 1000 Friends of Florida, research, writing and editing

**Vivian Young**, 1000 Friends of Florida, review

**Joanne Davis**, 1000 Friends of Florida, photos and editing support

**Charles Pattison**, 1000 Friends of Florida, editing and content suggestions

**Kathleen Morris**, 1000 Friends of Florida, review

**Catherine "Katie Anne" Donnelly**, 1000 Friends of Florida, research and writing

**Kelly Duggar**, 1000 Friends of Florida, research and writing,

**Kacy O'Sullivan**, 1000 Friends of Florida, research and writing,

## Front Cover Photos Courtesy of

Bird and Skunk: David Moynahan, FWC; Panther: Mark Lotz, FWC; Raccoons: Charles Littlewood and the Florida Wildlife Federation

## Back Cover Photos Courtesy of

Joanne Davis, 1000 Friends of Florida

1000 Friends of Florida would like to thank the following individuals for their generous contributions to this document. This does not imply, however, that the following contributors endorse this document or its recommendation.

**Amy Knight and Jonathan Oetting**, Florida Natural Areas Inventory for significant input and editing of Chapter 4, "Data and Analyses Development"

**Mark Easley of URS Corporation Southern and Joshua Boan**, Florida Department of Transportation, significant development of Chapter 8, "Planning for Transportation Facilities and Wildlife"

**Ronald Dodson**, President and CEO, Audubon International, helping to write, edit and comment on Chapter 9, "Planning Wildlife-Friendly Golf Courses in Florida"

**Benjamin Pennington**, graphics and project web site development

**Rebecca Eisman**, Creative Endeavors, graphic design

**Will Abberger**, Trust for Public Land • **Dave Alden Sr.**, FWC • **Matt Aresco**, Nokuse Plantation • **Ray Ashton**, Ashton Biodiversity Research & Preservation Institute, Inc. • **Tom Beck**, Wilson Miller, Inc. • **Lisa B. Beever**, PhD, AICP, **Charlotte Harbor**, National Estuary Program • **Shane Belson**, FWC • **Anthony (Tony) Biblo**, Leon County • **Jeff Bielling**, Alachua County • **Dr. Reed Bowman**, Archbold Biological Station • **Tim Breault**, FWC • **Casey Bruni**, Babcock Ranch • **Mary Bryant**, The Nature Conservancy • **John Buss**, City of Tallahassee • **Billy Buzzett**, The St. Joe Company • **Gail Carmody**, U S Fish and Wildlife Service • **Gary Cochran**, FWC • **Vernon Compton**, The Nature Conservancy • **Courtney J. Conway**, Arizona Cooperative Fish and Wildlife Research Unit • **Marlene Conaway**, KMC Consulting, Inc. • **Ginger L. Corbin**, U.S. Fish & Wildlife Service • **John Cox**, City of Tallahassee • **Sara Davis**, Florida Wildlife Federation • **Richard Deadman**, DCA • **Craig Diamond**, DCA • **Eric Dodson**, Audubon International • **Tim Donovan**, FWC • **Eric Draper**, Audubon of Florida • **Mark Endries**, FWC • **Dr. James A. Farr**, FDEP • **Kim Fikoski**, The Bonita Bay Group • **Neil Fleckenstein**, Tall Timbers Research Station • **Charles Gauthier**, DCA • **Terry Gilbert**, URS Corporation Southern • **Greg Golgowski**, The Harmony Institute • **Stephen Gran**, Manager, Hillsborough County • **Kate Haley**, FWC • **Cathy Handrick**, FWC • **Bob Heeke**, Suwannee River WMD • **Rachel A. Herman**, Sarasota County • **Betsie Hiatt**, Lee County Florida • **William Timothy Hiers**, The Old Collier Golf Club • **Dr. Tom Hctor**, Geoplan, University of Florida • **Ted Hoehn**, FWC • **Robert Hopper**, South Florida WMD • **David Hoppes**, Glatting Jackson • **Dr. Mark Hostetler**, University of Florida • **Greg Howe**, City of Tampa • **Anita L. Jenkins**, Wilson Miller, Inc. • **Bruce Johnson**, Wilson Miller, Inc. • **Rosalyn Johnson**, University of Florida • **Greg Kaufmann**, FDEP • **Debbie Keller**, The Nature Conservancy • **Carolyn Kindell**, Florida Natural Areas Inventory • **Michael J. Kinnison**, FDEP • **Barbara Lenczewski**, DCA • **Kris Van Lengen**, Bonita Bay Group • **Douglas J. Levey**, University of Florida • **Katie Lewis**, Florida Division of Forestry • **Jay Liles**, Florida Wildlife Federation • **Jerrie Lindsey**, FWC • **Bill Lites**, Glatting Jackson • **Mark Lotz**, FWC • **Martin B Main**, University of Florida • **Laurie Macdonald**, Defenders of Wildlife • **Julia "Alex" Magee**, Florida Chapter, American Planning Association • **Jerry McPherson**, Bonita Bay Group • **Tricia Martin**, The Nature Conservancy • **Terri Mashour**, St. Johns River WMD • **Dr. Earl McCoy**, University of South Florida • **Kevin McGorty**, Tall Timbers Land Conservancy • **Rebecca P. Meegan**, Coastal Plains Institute and Land Conservancy • **Julia Michalak**, Defenders of Wildlife • **Mary A. Mittiga**, U.S. Fish and Wildlife Service • **Rosi Mulholland**, FDEP • **Christine Mundy**, St. Johns River WMD • **Annette F. Nielsen**, FDEP • **Joe North**, FDEP • **Dr. Reed Noss**, University of Central Florida • **Cathy Olson**, Lee County Florida • **Matthew R. Osterhoudt**, Sarasota County • **John Outland**, FDEP • **Sarah Owen**, AICP, Florida Wildlife Federation • **Howard Pardue**, Florida Trail Association • **Lorna Patrick**, U.S. Fish and Wildlife Service • **Nancy Payton**, Florida Wildlife Federation • **Jeffrey Pennington** • **Larry Peterson**, Kitson & Partners • **Paola Reason**, Cresswell-Associates • **Ann Redmond**, Biological Research Associates • **Salvatore Riveccio**, Florida Wildlife Federation • **Preston T. Robertson**, Florida Wildlife Federation • **Christine Small**, FWC • **Scott Sanders**, FWC • **Keith Schue**, The Nature Conservancy • **Gregory Seamon**, Wilson Miller Inc. • **Vicki Sharpe**, FDOT • **Lora Silvanima**, FWC • **Daniel Smith**, University of Central Florida • **Joseph E. Smyth**, FDEP, Rainbow Springs State Park • **Noah Standridge**, Collier County • **Hilary Swain**, Archbold Biological Station • **Kathleen Swanson**, FWC • **Vicki Tauxe**, FDEP • **Jon Thaxton**, Sarasota County Commission • **Walt Thomson**, The Nature Conservancy • **Sarah Keith Valentine**, City of Tallahassee • **Keith Wiley**, Wildlife Biologist, Hillsborough County • **Michelle Willey**, Kitson & Partners/Babcock Ranch • **Donald Wishart**, Glatting Jackson • **Christopher Wrenn**, Glatting Jackson • **Julie Brashears Wraithmell**, Audubon of Florida

